

THE INTERNATIONAL CLINIC BONN



YOUR HEALTH –
OUR EXPERTISE

■ Table of contents

Foreword	3
About the clinic	4
Diagnostics and therapy	6
Your stay with us	8
For international guests	10
Beta Prevent – Check-up programme	12
Neurosurgery	14
Radiology	18
Orthopaedics and orthopaedic surgery – BetaOrtho	20
Sports medicine	24
Sports and rehabilitation – Beta Sport & Reha	25
Senology	26
Gynaecology and senology	27
Urology	28
General surgery and proctology	30
Plastic and aesthetic surgery – Beta Aesthetic	31
Internal medicine, interventional cardiology and special rhythmology	32
Internal medicine, endocrinology and diabetology	33
Nuclear medicine	34
Oncology	35
Angiology	36
Otorhinolaryngology	37
Dermatology and allergology	38
Ophthalmology	39
Internal medicine, gastroenterology and cardiology	40
Internal medicine and naturopathic medicine	41
Anaesthesia and pain therapy	42
Neurology and epileptology	43
Dental medicine/OMS surgery – Beta Dental	44
Psychiatry and psychotherapy	45
BetaGenese Klinik – Interdisciplinary psychosomatics and psychiatry	46
Laboratory medicine	48
Genetic diagnostics and pharmacogenomics	49
How to find us/Contact	50
Legal notice	51

Any term used collectively, such as patients, staff members, doctors or therapists, is to be understood as gender-neutral.

Welcome to the Beta Klinik!

Top quality diagnostics and treatment require the combination of two seemingly opposing concepts: professional specialization and holistic medicine. This has been our belief and the foundation of our success from the beginning.

High-level specialization in conjunction with state-of-the-art, university-level technology is essential for an international clinic like ours. Professionals from all medical disciplines work together on an interdisciplinary basis. Consequently, our patients are spared the inconvenience of seeking advice and optimal therapy from multiple doctors as well as the hassle of re-examination. Valuable information can be lost in the course of this process, as time is often too short to ensure thorough and complete handover of patient information between doctors.

The philosophy of our "one roof" concept is clear: We see people and their various diseases as a whole. We take as much time for you, our patients, as needed. Detailed discussions with our patients are as important to us as the high-end diagnostic devices used in our laboratory. Most test results are available for review during a patient's stay, and they can be discussed in consultation with all relevant specialists. As a result, our highly-specialized, yet diversified team of doctors can ensure a holistic approach.

We hope that you decide to place your trust in us and experience the exceptional medical treatment that we offer for yourself.

Dr. med. Axel Jung
Managing Partner

Prof. Dr. med. Thomas Gasser
Managing Partner



Dr. med. Axel Jung (left) and Prof. Dr. med. Thomas Gasser

About the clinic



Modern and welcoming: the private Beta Klinik

Our philosophy

The underlying sentiment driving our founding principle was the recognition that the highest medical quality could only be guaranteed via specialization; dissatisfaction with medical procedures also contributed. Less and less time for each individual patient, growing economic pressure and increasing administrative expenses adversely affect treatment options as well as the personal relationship between doctor and patient.

In 2005, Prof. Dr. med. Jürgen Reul came up with an idea to open his own patient-centred clinic while he was on a two-week, extreme cycling tour through Europe. His vision laid the foundation for the Beta Klinik, which opened at its „Bonner Bogen“ location by the Rhine River in 2008. Beta Klinik founders Prof. Dr. med. Jürgen Reul, Dr. med. Axel Jung and, later, Prof. Dr. med. Thomas Gasser channelled their many years of clinical experience into the realization of their concept of top quality diagnostics and treatment.

Since then, the Beta Klinik has developed into an internationally renowned private clinic with more than 20 specialties.

Quality through specialization

Today, more than 50 physicians and 180 employees work at the Beta Klinik and its subsidiaries. Together, they ensure optimal medical quality, which has been the Beta Klinik's goal since it was founded. The basis of our holistic approach is professional specialization. Individual knowledge is then brought together via interdisciplinary teams, thus ensuring the well-being of our patients.

Exceptional competence

The Beta Klinik attaches great importance to complementing high professional competence with internationally utilized equipment and university-level standards. Our clinic has several operating theatres that are fully equipped with the latest technology and an abundance of state-of-the-art diagnostic devices. Detailed information about our equipment can be found on the following pages.



On the road: Jürgen Reul envisions opening his own clinic.

Our doctors, therapists and employees continuously strive to improve their performance and competence. In addition, our Beta Klinik specialists offer regular training courses to the public. Specific information can be found on the Beta Klinik website at www.betaklinik.de as well as in the clinic blog.



The joint practice team (from the left) Prof. Dr. med. Thomas Gasser, Dr. med. Bettina Wolfgarten, Dr. med. Andre W. Demant, Dr. med. Axel Jung, Dr. med. Markus Klingenberg and Peter Braun.

Holistic medicine

Examination, treatment, operations, and rehabilitation are all based on a holistic approach. All medical experts at the Beta Klinik work towards one common goal – your health.

We will gladly arrange appointments according to your needs. Our effective internal communication allows us to offer tailor-made appointments, thereby minimizing the amount of time our patients spend at our clinic as well as reducing the number of trips made to the clinic.

We take care of our patients

In addition to high quality medical treatment and empathetic personal care, surroundings play an important role in a patient's recovery. Therefore, the Beta Klinik places great importance on maintaining a pleasant atmosphere, combining medical functionality with aesthetics.

Everything is about the patient

We spend a lot of time focusing on you and catering to your individual wishes and needs. Because your opinion is important to us, we conduct patient surveys in which you can tell us whether or not you find our services satisfactory.

The same guiding principle applies to all Beta Klinik employees:

**Patients
are the focus
of our work.**

■ Diagnostics and therapy



A cutting-edge computed tomography scanner for diagnostics and therapy.

State-of-the-art treatment concepts

Fifty doctors from all medical specialities are engaged, and support is provided by approximately 180 staff members from all medical fields. We work in a holistic manner and can, thanks to the close interdisciplinary cooperation among the involved parties, advise our patients on all aspects of our interdisciplinary approach. This ensures that our patients receive competent information quickly, even in cases of complex issues.

For diagnostics and subsequent therapy, we rely on a variety of first-class diagnostic devices. These are important components of our modern treatment concept.

Our equipment includes:

- two high-field magnetic resonance imaging systems of the latest technology (1.5 and 3 Tesla)
- a multi-slice computed tomography (CT) scanner
- a left heart catheter
- several X-ray systems
- several ultrasound devices, including a mamma ultrasound unit and a urology ultrasound unit with MRI diagnostics
- various endoscopy devices
- a shock-wave therapy device
- a Zeiss high-performance surgical microscope
- in-house sterilization for surgical instruments
- a digital mammography unit with tomosynthesis
- a neuronavigation system
- a dermatological laser
- neurofeedback (NFB)
- an in-house laboratory for immediate blood analysis
- a dedicated dental laboratory

- an in-house genetic diagnostics laboratory equipped with, among other things, a Personal Genome Machine (PGM) for Next-Generation Sequencing (state-of-the-art), an Ion Chef Instrument and a Real-Time PCR made by Thermo Fisher Scientific.

High-tech operating theatres:

Surgery is performed in fully equipped clean room operating theatres (Class 1A) as well as one Class 1B theatre, one interventional angiography room and one outpatient operating room. The recovery room and intensive care unit are immediately adjacent. All rooms are equipped with the most modern technology.

Gentle methods

People who are uncomfortable in enclosed spaces will benefit from our open high-field magnetic resonance imaging system, which has a particularly large opening (75 cm). Since the unit is only half as long as a customary device, a "tube effect" does not occur. For the majority of examinations, the patient's head is out in the open.

Our multi-slice computed tomography (CT) scanner has dose-reducing programmes that minimize radiation doses. In the hands of our experts, these devices deliver reliable and informative diagnoses – indispensable for successful treatment.

Second opinion

The Beta Klinik is also available to provide second opinions. We will gladly advise you on an existing diagnosis or therapy concept – for example, in the determination of whether or not surgery is indicated.

Check-up, sports medicine and performance diagnostic

For those who are interested, the Beta Klinik also offers a comprehensive check-up programme for the early detection of health risks and illnesses as well as the timely initiation of treatment. Please refer to page 12 for detailed information.

Since the beginning of 2016, Dr. Seibt Genomics, a molecular genetic analysis centre, has been part of the Beta Klinik. Please refer to page 49 for more information.

Sports medicine and performance diagnostics, which are supervised by our orthopaedic team, are other key Beta Klinik areas. Please refer to page 24 for detailed information.

Therapy and aftercare

We follow a principle of efficient, yet gentle treatment for every type of therapy, which is why we use the latest non-operative and operative treatment procedures. Whenever possible, we employ minimally invasive procedures during our outpatient and inpatient interventions as well as during operations.

Advantages over conventional methods include:

- fast pain relief, rehabilitation and healing
- small access points, small incisions
- gentle on the tissue
- no or minimized scarring
- often suitable for elderly or high-risk patients

Our therapeutic planning is based on careful interdisciplinary diagnostics. As soon as we determine your ailment causes and the correlations to your symptoms, we provide you with clear information about the odds, success and risks



Patients are intensively looked after in the rehabilitation centre.

associated with your therapy alternatives. After that, we make a decision – together – regarding the therapy that is most suitable for you.

Rehabilitation: physiotherapy and equipment-aided physiotherapy

At our "Beta Sport & Reha" outpatient rehabilitation centre as well as in our ward, our trainers and physiotherapists help you cope with everyday life as painlessly as possible, without any restrictions. Among other things, we use:

- physiotherapy
- equipment-aided, functional physiotherapy
- MEDX training
- HUBER® 360

■ Your stay with us



We take care of your needs from day one.

Top-quality service

Our philosophy – "Patients are our focus" – is achieved via our excellent level of medical care, our use of state-of-the-art diagnostic and therapeutic procedures as well as the high level of comfort our clinic provides. As a result, we are internationally known for the holistic quality of service that we provide. People from all over the world come to our clinic in Bonn to benefit from our first-class medical care and service. To find out more about our international patient management, please see page 10.

Do you have questions or need help? If so, please contact us. Our team of doctors, therapists, nurses and administrative staff will find the best solution for you as quickly as possible.

Cost and billing

The Beta Klinik is an accredited private clinic and bills its inpatient treatment on the basis of its own fees. Fees are based on the diagnosis-related group (DRG) system, which is customary in Germany, and are comparable to those charged by maximum care hospitals.

The physicians' outpatient and medical services are billed in accordance with the German medical fee schedule (GOÄ), which means arising costs can be settled through your private health insurance. Upon request, advance consultation can be provided and any questions can be answered. For further information, please review the "Patients and Visitors" section of our website.

Patients travelling from abroad often have different medical insurance schemes. Before your stay with us, consultation regarding your therapy plan and the prospective costs of your scheduled examinations and treatments is offered. Depending on your personal situation, costs incurred during your stay at the Beta Klinik can be covered by international insurance via a cost transfer through your embassy or personal payment. Please refer to page 10 for more information.

Accommodation

Our rooms

For inpatient treatment, the clinic is equipped with 50 comfortable, modern single rooms with en-suite bathrooms. Upon request, double rooms can be made available. The furnishings in all of our patient rooms are on par with those in a room of an upscale, four-star hotel.



Our suites

In addition, two luxurious suites, 55 and 58 square metres respectively, are at your disposal. Both units include a bedroom, a spacious bathroom and a separate living area.

The furnishings in our rooms and suites represent a successful combination of medical functionality and modern design.

Facilities and service

- 24-hour, all-round service
- fully electronic, controllable beds
- air conditioning
- minibar
- satellite and Internet TV, DVD player
- telephone and Internet (WLAN)
- fulfilment of nutritional needs and wishes
- chauffeur service (upon request)



Personal care is important to us.

If medical conditions permit, patients may choose to stay at the neighbouring Kameha Grand Hotel. The hotel can be reached from the ground floor of the clinic.

Parking

A dedicated VIP parking area is available on the ground floor of the Beta Klinik, and patients are entitled to receive a discounted parking rate. Detailed information can be found in the "Patients and Visitors" section of our website.



All patient rooms and suites are comfortably equipped.

■ For international guests



If necessary, professional interpreting services are provided.

Full-service package for patients

The unparalleled standard of medical care in Germany is appreciated worldwide, and the private Beta Klinik in Bonn has established its own excellent reputation. Our outstanding medical services and our holistic approach attract more and more patients from all over the world. In addition, we offer an attractive price/performance ratio, uncomplicated appointments and excellent support. All of our foreign guests' needs are taken care of.

Our service

We are available around the clock: From your first contact with us until your return home, we personally look after you and cater to your individual needs. If desired, private chauffeur service can be arranged for airport pick up; you and any accompanying person will also be given the option of staying at a first-class hotel.

Upon request, we can coordinate all internal and external clinical procedures – from the clarification of your medical status via diagnosis and therapy to your return journey, including documentation for physicians in your home country. We can also assist you with your visa, contact with embassies and necessary letters of invitation from your representative offices.

Communication and interpreters

Our internationally experienced doctors, therapists, and many of our employees speak fluent English. Upon request, interpreters can also be provided for other languages.

For our Arabic-speaking guests, a hotline has been set up (+49 (0) 228 909075-426), and a dedicated interpreting team is available at the clinic.

Your first contact with the Beta Klinik

Whether you have a medical question, need a second opinion or want to be treated by us, please send us all existing documentation relevant to your situation, such as reports on your condition, symptoms, medical reports, clinical reports, MRI scans, CT scans, X-ray recordings and ultrasound recordings. Please send your documents via CD or digital file (international@betaklinik.de).

Our specialists will review your case and make a recommendation based on the information contained in your documents. The Beta Klinik is known for its efficiency: Requests are usually processed within one business day; in very urgent cases, processing can be completed more quickly.

Preparing for your stay:

- Half a day should be allocated for Beta Prevent check-up examinations.
- For diagnostics and minor interventions, a two to three-day stay in Bonn is recommended.
- Depending on the procedure, a five to ten-day stay in Bonn should be expected for operations.

Costs

An initial cost estimate is provided with our medical treatment recommendation. In general, procedures that require inpatient treatment are calculated according to our fee schedule, which is based on the international DRG system.



Our employees take time to focus on you.

Our outpatient and diagnostic services are billed in accordance with the German medical fee schedule. Our billing department will provide assistance for specific questions.

Travel information

Nearest airports:

- Cologne/Bonn (CGN): 20-minute drive; 25-minute train ride to Oberkassel station
- Düsseldorf (DUS): 50-minute drive; 60-minute train ride to Bonn main station
- Frankfurt (FRA): 90-minute drive; 40-minute ICE train ride to Siegburg/Bonn station

Transfer service to the Beta Klinik can be arranged. Taxis are available at all airports and train stations.

Hotels

The most ideal accommodation option for patients, relatives and companions is the Kameha Grand Hotel, which is next to the clinic. When bookings are made through the Beta Klinik, this luxury hotel offers special conditions for all single and double rooms as well as suites with views of the Rhine River. Additional co-operations exist with the Maritim, Marriott, Hilton and Steigenberger hotels.

Apartments

Upon request, an apartment near the clinic can also be secured for the duration of your stay.

Clinic accommodation

All of our rooms and suites have free internet access and TV reception available in multiple languages. Our employees are prepared to fulfil your needs with regard to special meals and nutrition.



■ Beta Prevent – Check-up programme



At the Beta Klinik, you can choose from three different check-up options.

Please
contact us.
We will gladly
assist you.

Preventative health care

With a sensible precautionary programme like Beta Prevent, a foundation is laid for health and quality of life into old age.

The core element of Beta Prevent is our three-tier check-up programme (Basic, Executive and Premium). Upon request, it can be done in conjunction with nutritional counselling, an anti-aging programme, a psychosomatic check-up and genetic diagnostics.

The Beta Check-up

People who have high-pressure jobs, such as entrepreneurs, executives and individuals who live in demanding environments are exposed to an enormous level of stress for many years. For managers, this stress may be regarded as good for the mind, but the burdensome load can take its toll on the body. These individuals should pay specific attention to their health: In addition to following a healthy lifestyle that includes exercise/sport and a nutritious diet, preventative professional care should be of particular importance.

The Beta Check-up is an individual, comprehensive, preventative examination that aims to detect risk factors and diseases as soon as possible and in the early stages. The sooner health issues are discovered, the greater the chance of healing or preventing the emergence of diseases. This especially applies to serious and life-threatening diseases, such as heart attack, stroke and cancer.

Depending on individual needs, the Beta Klinik offers three check-up options:

Beta Basic Check

- detailed medical history
- neurological, internal and orthopaedic clinical examinations
- laboratory examination with all relevant check-up parameters
- MRI of a region of the body after consultation with a physician and after indication
- computed tomography (CT) scan of the lungs and the heart for risk assessment – for a given indication
- resting and stress ECG
- pulmonary function test
- ultrasound examination of the carotid arteries to assess the risk of stroke
- ultrasound examination of the thyroid gland
- heart echocardiography
- vision and hearing tests
- results analysis and therapy recommendation
- recommendations and check-up plan for the future

Beta Executive Check

- Beta Basic Check-up plus
- specialist consultation on request or as required
- full-body magnetic resonance imaging (MRI), including brain-supplying vessels, with 3-D reconstruction
- DXA bone density measurement – for a given indication
- diabetes risk analysis



A detailed medical history, an examination and consultation are part of all check-ups.



Dr. med. Andre W. Demant

Beta Premium Check

- Beta Executive Check-up plus
- two specialist consultations on request or as required
- MRI (with contrast kinetics) of the mammae or mammography in women
- 3 Tesla MRI of the prostate in men
- computed tomography (CT) scan of the coronary vessels and the lungs, with contrast medium and 3-D reconstruction – for a given indication
- determination of the patient's unique hormone profile
- tumour marker

Depending on your wishes or requirements, our range of services can be expanded to include consultations or additional services (gastroscopy/colonoscopy, dermatology, ENT, neurology, cardiology, urology, gynaecology, endocrinology, diabetes, proctology, dentistry, sports check, oncology, plastic surgery, genetic screening, etc.).



YOUR EXPERTS:

Prof. Dr. med. Thomas Gasser

You receive

- access to the latest examination procedures and diagnostic devices
- medically and personally meaningful examinations – depending on age, gender, risk profile and individual life situation
- care from and examinations done by experienced and specialized doctors
- professional documentation of all reports, therapy recommendations and findings
- detailed counselling regarding potential risk factors and illnesses as well as individual therapy recommendations
- optional accommodation at the neighbouring Kameha Grand Hotel or the combination of the "Beta Check-up" and a wellness weekend at the Kameha Grand Hotel at a special rate

If you are interested in one of our check-up programmes, please contact us at:

check@betaklinik.de or +49 (0) 228 909075-158

We will gladly assist you.



Deep brain stimulation has proven effective in patients with Parkinson's disease.

Cutting-edge operating methods

Neurosurgery is a medical specialty that deals with the detection and treatment of diseases, injuries and malformations of the central nervous system and its sheaths as well as the peripheral and autonomic nervous systems. It is also comprised of comprehensive diagnostic examinations, surgical treatment, conservative therapy and rehabilitation. These neurosurgery components can all be found at the Beta Klinik: Dr. med. Axel Jung and Prof. Dr. med. Thomas Gasser offer diagnostics and treatment at the highest medical and professional level.

In addition to their extensive experience, our neurosurgery specialists rely on state-of-the-art surgical technology. Most operations are performed using a powerful surgical microscope and a microsurgical technique. Computer-assisted neuronavigation, MRI, Doppler ultrasound as well as electrophysiological monitoring are standard procedures used for interventions in functionally critical brain and nerve regions.

Furthermore, expertise in the most important related disciplines – neurology, neuroradiology, anaesthesia, otorhinolaryngology, ophthalmology and oral and maxillofacial surgery – is in the immediate vicinity. We also work closely with our colleagues in endocrinology. Therefore, an individual and holistic therapy plan for complex cases can be developed. All preliminary and follow-up examinations as well as subsequent physiotherapy in our Beta Sport & Reha division (page 25) are coordinated for our patients.

Head and brain surgery

At the Beta Klinik, diseases of the head and brain are operated on according to the latest scientific knowledge. If possible, procedures are minimally invasive.

Treated diseases/disorders (examples)

- tumours
- vascular malformations (aneurysm, AV angioma/fistula)
- blood vessel occlusion
- trigeminal neuralgia (facial pain)
- glossopharyngeal neuralgia (shooting, piercing throat pain)
- hemifacial spasm (facial spasm: penetrating, painful facial muscle cramps)
- hydrocephalus (spinal fluid accumulation)

Surgical range of services (examples)

- navigation-assisted microsurgery of brain tumours
- awake brain surgery
- biopsies (tissue sampling)
- shunt surgery (short circuit connection) – for spinal fluid accumulation
- microvascular decompression (Jannetta surgery) – trigeminal neuralgia pressure relief
- microsurgery in vessel malformations cases



Beta Klinik experts have access to state-of-the-art surgical technology.



Dr. med. Axel Jung

Stereotaxy and functional neurosurgery

Functional neurosurgery and stereotaxy provide hope for patients with neurological/psychiatric disorders, brain tumours and chronic pain syndromes. Stereotaxy is a method by which a determination of a target point in the brain, accurate to the millimetre, is possible. It is also used in neurosurgical operations at the Beta Klinik, for example: brain tumour tissue sampling, targeted and, thus, gentle removal of deep brain tumours, acute treatment in patients with cerebral haemorrhage as well as laying of drainage lines used to insert medication into the brain.

Stereotactic brain surgery is a minimally invasive procedure that uses imaging technology that enables surgeons to precisely determine and observe distances and access routes. This allows for operations that are virtually free of harm. For example, small cell samples can be removed and tumour types can be clearly identified. This information is essential for further treatment planning in order to determine whether radiation or microsurgical removal of a tumour is appropriate.



YOUR EXPERTS:

Prof. Dr. med. Thomas Gasser

Stereotactic surgery can also be used to treat movement disorders such as essential tremor, generalized dystonia, idiopathic Parkinson's disease and some forms of chronic, therapy-resistant pain. The centres in the brain that control body movement are interconnected via neural pathways. There are inhibitory and excitatory compounds. A sophisticated balance of inhibition and excitation provides orderly movement patterns. However, if this balance is disturbed, it can lead to exaggerated movement, as with dystonia, or diminished movement, as with Parkinson's disease. The



The access route for an endoscopic procedure is precisely defined.



Every diagnosis is preceded by a thorough examination.

disturbance in this balance can be corrected through deep brain stimulation. Depending on the disease, a specific target is selected in the brain, into which a thin electrode is inserted. The electrode is connected to a small stimulator via a cable under the skin. The stimulator continuously delivers electrical pulses via the electrode, thereby inhibiting the surrounding nerve cells. This highly precise stereotactic procedure allows our specialists to implant electrodes into a closely circumscribed area that is usually located in low-lying regions of the brain. The term "Deep Brain Stimulation" or "DBS" is derived from this procedure. The implantation of "brain pacemakers" for high-frequency deep brain stimulation is one of the most modern medical procedures that we can provide for you.

Treated diseases/disorders (examples)

- movement disorders (essential tremor, Parkinson's disease, dystonia)
- chronic, therapy-resistant pain

Medical range of services (examples)

- stereotaxy and functional neurosurgery, for example:
 - tumour biopsy (tissue sampling)
 - implantation of "brain pacemakers" (deep brain stimulation/DBS) – for movement disorders and chronic, therapy-resistant pain

Gentle spine surgery

Gentle and effective spine surgery is a main area of focus for Beta Klinik neurosurgeons and neurointerventionalists. Minimally invasive procedures are used in this area, whenever medically possible and appropriate. During surgical procedures, neurosurgeons can rely on a comprehensive range of highly precise diagnostic and surgical techniques.

Neurosurgery is characterized by the combination of a highly qualified treatment team and the application and development of innovative surgical techniques. Cutting-edge anaesthetic processes and optimized surgical procedures ensure minimal risk and maximum comfort for patients. Critically ill patients receive 24-hour post-surgical monitoring and optimum care in our intensive care ward.

Treated diseases/disorders (examples)

- slipped disc/herniated disc
- spinal canal stenosis (narrowing of the spinal canal)
- instability/listhesis
- facet joint arthrosis/facet syndrome
- osteoporosis/vertebral fracture
- vascular malformations

Surgical range of services (examples)

- endoscopic disk surgery – in cases of herniated discs of the lumbar spine
- microsurgery/decompression – in cases of herniated discs and spinal canal stenosis
- disc prosthesis/artificial disc replacement (ADR) – in cases of herniated discs of the cervical spine
- spinal cord stimulation (SCS) – in cases of therapy-resistant, chronic pain



Through continuous training and interdisciplinary exchange, we offer state-of-the-art procedures.

- stabilization/fusion surgery – in cases of instability/listhesis
- vertebroplasty and kyphoplasty – in cases of vertebral fracture
- CT-guided microtherapy – in cases of back pain
- spacer surgery – in cases of spinal canal stenosis
- platinum coils and embolization (obstruction/reduction of blood flow) – for vascular malformations (spinal cord)

Nerve compression elimination

Disorders of the peripheral nervous system, i.e., disorders of the nerves outside the brain and spinal cord, are also treated at the Beta Klinik. Our patients often suffer from nerve compression syndrome, a condition in which a nerve is trapped – for example, by connective tissue, bone or muscle. This can cause pain, paraesthesia, numbness, loss of strength, muscular atrophy as well as symptoms of paralysis in the area surrounding the particular nerve. Failure to address these issues can result in permanent damage. However, if the problem is discovered in time, the nerve can completely heal as the compression can be relieved via a minor surgical procedure.

Before surgical treatment of nerve compression syndrome takes place, the electrical conductivity of a patient's nerves is measured to determine which nerve is causing the symptoms. During the course of a microsurgical operation, the nerve is released from its entrapment via the gentle and careful removal of the tissue that is pinching it.

Treated diseases/disorders

- nerve compression syndromes (trapped peripheral nerve), such as:
 - carpal tunnel syndrome (wrist)
 - tarsal tunnel syndrome (ankle)
 - cubital tunnel syndrome (elbow)
 - Morton's neuroma (forefoot)
 - meralgia paraesthetica (groin)

Surgical range of services

- microsurgical decompression (relief of a compressed peripheral nerve)



Every intervention requires the utmost care and concentration.



Radiology: Imaging procedures provide in-depth diagnostics.



Prerequisite for successful treatment

Radiology concerns the investigation of diseases of the human body using state-of-the-art imaging techniques. We offer the entire spectrum of modern and reliable diagnostics, which is a prerequisite for successful treatment. Our team – Dr. med. Andre W. Demant (paediatric radiology), Dr. med. Christoph Manka (radiology/neuroradiology), Dr. med. Thomas Weimann (radiology/neuroradiology) and Dr. med. Bettina Wolfgarten (radiology) – fully focus on our patients' radiological care and needs. As a result, they are able to accurately determine the best method of examination for each patient. A competent team of anaesthetists is available on site, so adults and children can be examined under anaesthesia, if necessary.

Radiology and paediatric radiology

Using the most modern devices, our radiologists perform diagnostic examinations on adults and children. In addition to conventional X-ray and computed tomography (CT), radiation-free methods such as magnetic resonance imaging (MRI) and ultrasound are used, especially in children.

Diagnostic devices

- open, high-field MRI scanner (1.5 Tesla) – particularly suitable for patients who suffer from claustrophobia (fear of enclosed spaces) and for those who are overweight (up to 250 kg)
- high-field MRI scanner (3 Tesla) for particularly high-resolution images of the brain or joints
- multi-slice spiral CT scanner with radiation reducing programmes
- digital X-ray device
- digital angiography device (angiography, myelography)
- high-resolution ultrasound device
- bone density scanner (DXA)

Diagnostic and therapeutic services

Entire range of MRI scans, including the following special examinations:

- whole-body MRI
- cardiac MRI (heart MRI), MR angiography
- MRCP (imaging of the bile and pancreatic ducts)
- prostate MRI (multiparametric MRI using 3 Tesla)
- paediatric MRI (also under sedation/anaesthesia)

Entire range of CT scans, including the following special examinations:

- CT angiography (vessels of the head, neck, kidney, etc.)
- cardiac CT (coronary vessels)
- ICT interventions (biopsy, microtherapy/pain therapy)

In addition, the Beta Klinik radiology department offers:

- second opinions in the areas of neuroradiology and paediatric radiology
- MRI scans for overweight patients
- newborn hip screening (DEGUM certified) with paediatric orthopaedic counselling, if necessary
- CT-guided pain therapy (microtherapy of the spine and joints)
- bone density scans using the low-radiation DXA method

Neuroradiology and paediatric neuroradiology

Neuroradiology is one of the main areas of focus for the Beta Klinik radiology team. Using the latest medical technology, our experts examine the spines and brains of adults and children.

Therapeutic measures consist of minimally invasive interventions for the treatment of spinal and vascular disorders.



Detailed explanations alleviate children's fears.

Diagnostic MRI services (examples)

- MR angiography (vessels of the head, neck, kidney, pelvis and leg)
- brain MRI, including functional neuro MRI of the brain
- diffusion, perfusion, fMRI, DTI, tractography
- spinal MRI/MR myelography
- paediatric MRI (also under sedation/anaesthesia)

CT

- CT angiography (vessels of the head, neck, kidneys, pelvis and leg)

Angiography

- intra-arterial angiography
- phlebography (imaging of the veins)
- myelography (imaging of the spinal canal)
- discography (contrast agent disc diagnostics)

Minimally invasive services

- coiling (platinum coils) and embolization (obstruction/reduction of blood flow) – in cases of vascular malformations (aneurysm, AV angioma/fistula, spinal cord)
- dilatation or stent – in cases of vascular stenosis
- vertebroplasty and kyphoplasty – in cases of vertebral fracture
- microtherapy of the spine
- CT and fluoroscopy-guided biopsies (tissue sampling)



YOUR EXPERTS:

Dr. med. Andre W. Demant



Dr. med. Christoph Manka



Dr. med. Thomas Weimann



Dr. med. Bettina Wolfgarten

■ Orthopaedics and orthopaedic surgery – BetaOrtho



The BetaOrtho team handles all diseases of the musculoskeletal system.

Diagnosics, therapy and aftercare

The experienced team surrounding Peter Braun, Dr. med. Markus Klingenberg and Dr. med. Hans-Philipp Springorum treats all diseases of the musculoskeletal system, including congenital and acquired joint and extremity deficiencies, degenerative joint diseases (arthrosis) as well as sports injuries in children and adults.

Treatment is conservative (non-operative), chirotherapeutic and operative (outpatient and inpatient). For surgical procedures, two Beta Klinik Class 1 operating theatres, including intraoperative 3-D X-ray diagnostics, are available for the orthopaedics team. Postoperative monitoring takes place in an interdisciplinary recovery area, in which intensive therapy units are also available. Physiotherapy – whether before or after an operation – can be carried out at the Beta Klinik rehabilitation centre, Beta Sport & Reha.

At the Beta Klinik, specialists assist you with acute and chronic ailments throughout your entire treatment period. Consequently, a relationship of trust can be established between you and your doctor as your contact person, who will be familiar with your diagnostic findings and circumstances, will always be the same. For example, should an operation be necessary, your treating physician will not only carry out surgical preparation as well as the actual procedure, but they will also handle post-operative care (if desired).

If a medical colleague refers you to us for a surgical procedure, they usually provide us with all information needed to ensure optimal care, and they carry out post-operative treatment.

Conservative treatment

The prerequisites for effective conservative treatment are detailed discussion and thorough physical examination, which is why we take the necessary time to discuss your therapy with you.

Our conservative treatment method areas of focus are:

- chirotherapy/manual medicine and osteopathy
- differentiated movement analysis for functional complaints
- acupuncture
- shockwave therapy
- injection therapy for all joints with, for example, the patient's blood (platelet-rich plasma/PRP) or hyaluronic acid (if required, ultrasound or CT-guided)
- supply and adjustment of orthopaedic aids such as bandages, orthoses and insoles
- comprehensive rehabilitation therapy

Operative treatment areas

Bundled competence under one roof: Our orthopaedists offer the entire surgical treatment range.



Advance intensive counselling and support during all treatment phases.

Endoprosthesis

In cases of severe joint wear (arthrosis), despite the most modern conservative and minimally invasive therapy procedures, joint replacement or axis correction is necessary. Your experienced surgeon will advise you on the various treatment options, with regard to your personal needs. All modern procedures, with custom-made, partial/full prosthesis, are offered. Hip, knee and shoulder implants. The radiological examinations (CT/MRI) necessary for custom-made prostheses are carried out at our clinic. Complex joint replacement operations are also conducted by our orthopaedic team. Peter Braun and Dr. Springorum both have many years of experience as endoprosthesis department heads.

- knee (partial/total endoprosthesis, individual prosthesis)
- hip
- shoulder
- endoprosthesis replacement surgery
- surgery around the knee joint in cases of malposition or arthrosis

Arthroscopy

Arthroscopy is a surgical procedure in which our seasoned experts introduce a probe (arthroscope) into the articular cavity. Compared to open joint surgery, arthroscopy usually results in less pain. In addition, healing usually proceeds much faster, and the joint regains mobility and resilience much earlier. Whether arthroscopy or open surgery is suitable/necessary can be clarified during extensive preliminary discussions with our orthopaedists. Dr. Klingenberg is a specialized arthroscopist and is a member of the Society for Arthroscopy and Joint Surgery (Gesellschaft für Arthroskopie und Gelenkchirurgie).

Shoulder

- impingement syndrome
- reconstruction of the rotator cuff
- instability of the shoulder/shoulder joint
- disorders of the biceps tendon
- treatment of arthrosis of the shoulder/shoulder joint
- treatment of fractures



YOUR EXPERTS:

Peter Braun



Dr. med. Markus Klingenberg



Dr. med. Hans-Philipp Springorum

■ Orthopaedics and orthopaedic surgery – BetaOrtho



Movement analysis is necessary to treat ailment causes.



Elbow

- disorders of the distal biceps tendon
- epicondylitis (tennis/golfer's elbow)
- arthrosis treatment
- treatment of fractures

Knee

- meniscus surgery (resection/suture)
- cartilage therapy
- cruciate ligament surgery (preservation and replacement of the anterior and posterior cruciate ligaments)
- instability of the kneecap (MPFL reconstruction)
- treatment of fractures

Ankle

- treatment of joint stiffness (impingement syndrome)
- cartilage therapy
- reconstruction of the outer/inner ligaments
- syndesmosis stabilization
- treatment of fractures

Foot surgery

Dr. Klingenberg and Dr. Springorum are two experienced foot surgeons who are available to deal with all foot-related complaints. In addition to surgical procedures, they handle all aftercare and draw up rehabilitation training plans.

- hallux valgus and hallux rigidus
- claw toes and hammer toes
- Achilles tendon pain/rupture
- removal of exostoses (Haglund's deformity, os trigonum syndrome)
- hind foot corrections (heel, ankle bone)
- treatment of fractures

Traumatology

In traumatology, specialists treat fractures of long bones, injuries to soft tissues as well as ligament and tendon ruptures. At weekends, patients with acute injuries can receive emergency consultation.

Interdisciplinary centres

Close interdisciplinary cooperation among different disciplines is a special feature of the Beta Klinik. The following centres have been established:

Centre for Multimodal Spine Therapy

Back pain often has many causes. Therefore, sustained, successful therapy is dependent upon an interdisciplinary approach. At the Centre for Multimodal Spine Therapy, competencies from neurosurgery, orthopaedics, psychotherapy, pain therapy as well as sports and rehabilitation are bundled together.

On the basis of comprehensive diagnostics, various conservative measures are combined in one week of inpatient treatment:

- pain therapy sessions
- stress management strategies
- acquisition of relaxation techniques
- interventional pain therapy
- manual medical therapy
- daily physiotherapeutic treatment

Inpatient therapy can subsequently be stabilized and continued on an outpatient basis.

Centre for Sports Orthopaedics



An in-depth examination is conducted before each surgical procedure.

Preventing injuries is better than treating them. Therefore, one of the main areas of focus for our orthopaedics team is the functional movement analysis of athletes and patients. In this scenario, orthopaedic surgeons work together with the Sports medicine and Beta Sport & Reha departments.

Over time, mechanical changes (injury, scar tissue, muscular imbalance and weakness, loss of mobility, etc.) often occur, which prevent the body from working as efficiently as it can and should. This often impairs basic mobility and subsequently leads to misalignment and incorrect movement patterns. Performance loss and injury can result. Through movement analysis, our Beta Klinik orthopaedists can identify linked symptoms and, thus, treat the actual cause.

Another important sports orthopaedics area is the so-called "return-to-play" decision, which should be made in close consultation with an experienced sports physician.

- Functional Capacity Screen (FCS)
- Functional Movement Screen (FMS)
- Y-Balance Test (Y-BT)
- Selective Functional Movement Assessment (SFMA)
- neuromuscular analysis (HUBER® 360)
- lactate measurements

Centre for Osteoporosis Therapy

The close interdisciplinary collaboration among orthopaedists, radiologists and endocrinologist Prof. Dr. med. Sven Schinner is a unique feature of our Centre for Osteoporosis Therapy. Osteoporosis, or bone loss, is often regarded as a disease found in older women, but this is not entirely true. Men can also be affected and can equally suffer from the sometimes serious consequences. It is, therefore, advisable for certain population groups to prevent the development of

osteoporosis – or to have it detected and treated in a timely manner. During the diagnosis and treatment of osteoporosis, clarifying the exact cause is important in order to ensure the appropriate therapeutic concept is administered.

Centre for Paediatric Orthopaedics

Via close cooperation between the orthopaedics team and paediatric radiologist Dr. med. Andre W. Demant, infant hip ultrasound examinations are offered as well as conservative and operative treatments for foot, hip joint and axial misalignment.



Performance diagnostics – keeping sports healthy.

YOUR EXPERT:



Dr. med. Markus Klingenberg

Increase performance, prevent injuries

Dr. Markus Klingenberg offers exceptional sports medicine support – with an interdisciplinary concept – to amateurs as well as professionals. Careful examinations and patient-specific recommendations help increase performance and prevent injuries. This is achieved via careful examination of the cardiovascular system and the musculoskeletal system in conjunction with powerful performance diagnostics.

Sports medicine is an interdisciplinary specialty. As a result of close cooperation among the individual disciplines at the Beta Klink, athletes are offered optimal conditions for high-quality care and treatment.

At the beginning of each medical examination, we work together with our patients to determine their sporting goals, clarify existing ailments that occur during the execution of their sporting activities, and then develop a tailor-made examination and care concept for them. We look at how efficiently a patient's cardiovascular system, breathing and metabolism work under stress, and we analyze their movements. Finally, we discuss their results with them and provide practical recommendations for training and competition that will help them achieve their goals.

Sports medicine range of services

- orthopaedic clinical examination
- neurological examination
- internal examination
- "return-to-sport" test following sports injuries
- performance diagnostics (lactate measurement)
- diving fitness examination
- stress ECG
- pulmonary function test
- blood analysis
- body composition analysis (bioelectrical impedance analysis)
- functional movement analysis: Functional Capacity Screen, Functional Movement Screen, Y-Balance Test
- neuromuscular diagnostics and neuromuscular training
- computer-assisted, isolated training of the neck and lumbar spine (MEDX)
- sports medicine consultation and coaching
- via Beta Prevent: Sports Check
- via Beta Sport & Reha: physiotherapy, equipment-aided strength, endurance and personal training



Ideal conditions for flexible and individual therapy approaches in physiotherapy.

Return to fitness through training

Our trainers and physiotherapists will help you get through everyday life as painlessly as possible with regard to musculoskeletal system complaints and following operations and serious illnesses. In consultation with your treating physician, you will be looked after during your entire stay with us, including follow-up outpatient care, if required. It is our aim to find the causes of your ailments as well as any correlating factors and to effectively treat them.

Our therapy is based on the following pillars:

1. Physiotherapy

- Functional Orthonomy and Integration (FOIR), manual therapy, manual lymph drainage, cross-friction, heat/mud treatments, electrotherapy, IASTM treatment (Instrument Assisted Soft Tissue Mobilization), FDM (Fascial Distortion Model according to Stephen Typaldos, D.O.), medical flossing, CMD (Cranio-mandibular Dysfunction) as well as FMS (Functional Movement Screen) and Y-balance test, which are used for diagnostics.

2. Equipment-aided physiotherapy

- functional training of everyday, sport and work-related movements on, for example, pulley, vibration, or sling-oriented devices.

3. MEDX training

- computer-assisted, isolated training of the neck and lumbar spine using first-class biomechanical and ergonomic devices

4. Neuromuscular training

- individual neuromuscular training using "HUBER® 360"



YOUR EXPERTS:

The Beta Sport & Reha team

5. Mobility and strength training

- the "five-method", based on biokinematics

Diseases/disorders

- herniated discs and spinal canal stenosis
- joint arthrosis/arthritis
- shoulder pain
- tennis/golfer's elbow
- blockages of the spine (lumbago), ribs, head and sacroiliac joint
- spondylolisthesis
- whiplash
- Achilles tendon ailments (from irritation to rupture)
- knee problems
- foot sprains, ligament injuries
- personalized programs for patients with urinary incontinence

Our team consists of educated and trained physiotherapists and coaches who work on your rehabilitation under the direction of a team of orthopaedic doctors.



Personal care combined with modern diagnostics.

Focus on breast health

Services offered by Dr. med. Bettina Wolfgarten are aimed at patients covered by all health insurance companies and includes the complete spectrum of modern imaging procedures. These methods include ultrasound, digital radiography, computed tomography (CT) and magnetic resonance imaging (MRI). One of Dr. med. Bettina Wolfgarten's areas of focus is breast imaging. In the field of senology, she works very closely with gynecologist and senologist Dr. med. Matthias Wolfgarten.

In addition to the conventional imaging methods of sonography and mammography, tomosynthesis is an option. In this 3-D mammography examination, the X-ray tube moves in a semicircle above the breast and creates three-dimensional images every few millimetres.

In addition, samples of tissue requiring further examination can be taken with millimetre precision by means of imaging techniques.

Diagnostic services

- digital radiography
- computed tomography (skull, neck, chest, abdomen, skeletal system and osteo CT)
- magnetic resonance tomography (including breast MRI)
- ultrasound
- mammography, including galactography (mammary duct imaging)
- MR angiography (MRI vascular imaging)
- tomosynthesis (3-D mammography)

Minimally invasive procedures

- stereotactic vacuum biopsy (image-guided sampling of tissue via the use of vacuum suction)
- tomosynthesis biopsy (tissue sampling of lesions that are visible in tomosynthesis images, but do not appear in ultrasound or in 2-D mammography images)
- ultrasound-guided punch biopsy (tissue sampling by means of a punching needle)
- MR-guided, vacuum-assisted biopsy (tissue sampling under MRI via the use of vacuum suction)
- stereotactic wire localization biopsy (image-guided marking of tissue requiring further examination)

YOUR EXPERT:



Dr. med. Bettina Wolfgarten



The gynaecological examination begins with a detailed discussion.

Tailor-made women's health

Dr. med. Matthias Wolfgarten and his colleague Dr. med. Alina Abramian provide modern, high-quality, individualized patient care. As their main area of focus is the treatment of breast diseases, they also work in close cooperation with Dr. med. Bettina Wolfgarten, who specializes in the area of senology (female breast). From diagnostics (ultrasound, tissue sampling) and counselling to the complex, multi-modal treatment of breast cancer (mammary carcinoma), our patients receive everything from a single source. Our operative range of services includes minor gynaecological operations, such as the removal of tissue from the uterus (curettage), operative and reconstructive breast cancer treatment, microsurgical and endoscopic surgery as well as open abdominal surgery. Dr. Wolfgarten also provides conservative services in the area of gynaecological oncology (chemotherapy).

Gynaecological early detection screening is also part of our treatment spectrum. Dr. Wolfgarten provides advice on issues concerning contraception, vaccinations (e.g., for protection against cervical cancer) and hormone replacement therapy (e.g., in cases of menstrual cycle disorders or menopause-related complaints).

Range of services

Individual counselling, diagnostics and therapy for:

- malignant breast diseases (breast cancer)
- benign breast diseases (e.g., fibroadenoma, cysts)
- benign gynaecological diseases (e.g., uterine fibroids, endometriosis, adhesions, ovarian cysts, hysterectomy)
- malignant gynaecological diseases (e.g., cervical, uterine and ovarian cancer)
- mammography (DEGUM II)

- ultrasound-guided punch biopsy of the breast (tissue sampling)
- high-resolution gynaecological ultrasound examination
- gynaecological early detection screening
- minimally invasive gynaecological operations (e.g., hysteroscopy, laparoscopy)



YOUR EXPERTS:

Dr. med. Matthias Wolfgarten



Dr. med. Alina Abramian



The entire diagnostic and therapeutic range of services is offered.



Prostate and bladder treatment

Under the leadership of Prof. Dr. med. Sebastian Wille, the complete diagnostic and therapeutic spectrum of urological diseases is offered by the Beta Klinik urology centre. Our service areas include urologic oncology, urogynaecology, reconstructive urology, prosthetic urology, andrology and general urology, including prostate and stone disorders.

Urologists are sought after when it comes to diseases of the kidneys, ureters, bladder, prostate, testes and external genitals. Prof. Wille's team treats men as well as women and children.

Modern equipment is available for patient treatment. It includes a flexible cystoscope, a state-of-the-art 3-D ultrasound machine and a urodynamic measuring station.

The following services are conducted at our practice, in our outpatient operating room or in our inpatient operating theatres:

Medical range of services (examples)

- cancer screening (renal cancer, bladder cancer, testicular cancer, penile cancer and prostate cancer)
- chemotherapy
- kidney stones
- prostate disorders, benign prostatic hyperplasia (BPH)
- incontinence (urine leakage)
- urodynamic measuring station
- erectile dysfunction (potency weakness)
- cystitis, prostatitis
- paediatric urological disorders: phimosis, undescended testicles, nocturnal enuresis

Outpatient surgical procedures

- adult circumcision
- urethral dilation
- Botox injections for overactive bladder
- sterilization (vasectomy)
- prostate punch biopsy (ultrasound fusion-guided biopsy)

Inpatient surgical procedures

- prostate resection or laser treatment
- bladder tumour resection
- urethral dilatation
- urethral reconstruction
- surgical stone therapy
- penile prosthesis
- surgery for kidney cancer
- radical removal of the prostate in cases of prostate cancer (prostatectomy)
- surgery for bladder cancer, complete removal of the bladder and bladder replacement
- surgery for penile cancer
- surgery for testicular cancer
- gender reassignment surgery in cases of transsexualism
- bladder pacemaker in cases of overactive bladder or underactive bladder
- incontinence surgery, tension-free vaginal tape (TVT), transobturator tape (TOT), artificial sphincter
- surgical correction of prolapsed pelvic floor
- surgical procedures on external genitalia (hydrocelectomy, penile impairment, varicocele repair)



A relationship of trust with the treating physician is particularly important in urology.

The Beta Klinik operations listed here are performed in a minimally invasive manner, conducted via open surgery or done laparoscopically.

Frequent urination and the sensation that the bladder is never completely empty: These are the typical complaints associated with benign prostatic hyperplasia (BPH). One in five men aged 50 to 60 years is affected. While this condition can be very annoying, it is usually harmless. If treatment is necessary, patients can get in-depth, haste-free information from the urological department regarding the advantages and disadvantages of the various options.

For the reduction of prostate size, innovative, minimally invasive techniques are used at the Beta Klinik urology centre. These procedures can also be used to treat patients who take blood-thinning drugs like Marcumar®, Aspirin®, Plavix® or Xarelto®. Discontinued use of these medications is not usually required. Due to the use of a modern resection technique, sexuality remains unchanged following the procedure.

Other key areas include the diagnosis and treatment of urinary incontinence, leakage of the bladder sphincter and, especially in children, treatment of frequent urinary tract infections. In the rehabilitation and sports area of the Beta Klinik, personalized programs with trained physiotherapists are offered for patients with urinary incontinence.

For patients with urologic cancer, all relevant aspects are discussed in an interdisciplinary manner among members of the tumour board of the Centre for Integrated Oncology (CIO), Cologne/Bonn. In cooperation with radiation therapists, pathologists, radiologists and urologists, a customized therapy concept is developed.

The Beta Klinik has high-quality imaging techniques, such as 3-Tesla MRI and innovative, fusion-guided biopsy. As a result, after a multiparametric MRI of the prostate is performed in combination with the fusion-guided biopsy technique, targeted tissue collection of the utmost precision and detection can be carried out.

In addition, the Beta Klinik has an in-house gene laboratory, which can be used to perform gene profiling in order to assess biological aggressiveness and tumour biology in cases of prostate cancer.



Prof. Dr. med. Sebastian Wille

■ General surgery and proctology



Hubert Lausberg has specific expertise and many years of experience.

Abdominal disorders

Dr. med. Hubert Lausberg's team is at your disposal with regard to questions concerning general and abdominal surgery (surgery of the abdominal organs, the abdominal wall and the thyroid gland) as well as coloproctology (diagnostics and treatment of diseases and disorders of the colon and rectum).

His medical areas of focus are hernia surgery (inguinal, umbilical and abdominal wall surgeries as well as incisional hernia repair), gallbladder surgery and appendectomies (minimally invasive) as well as thyroid surgery. Special expertise is available in the field of diagnostics as well as the conservative (non-operative) and operative treatment of diseases and disorders of the colon and rectum.

Diagnostic and conservative range of services

- endoscopy: gastroscopy, colonoscopy
- proctologic diagnostics: rectoscopy, proctoscopy, anorectal manometry, endorectal ultrasound
- non-operative treatment of haemorrhoids (e.g., cauterization)

- diagnostics and conservative treatment of constipation and fecal incontinence
- aftercare following bowel surgery
- second opinion/counselling prior to abdominal surgery

Surgical range of services

- hernia surgery (inguinal hernia, umbilical hernia, abdominal wall hernia and incisional hernia)
- cholecystectomy and appendectomy (laparoscopy)
- thyroid gland surgery
- surgical treatment of haemorrhoids (staple or conventional), anal fissures (anal laceration), anal abscesses and fistulas, Pilonidal cysts (coccygeal fistulas)
- rectocele surgery (herniation of the rectum into the vagina), internal and external rectal prolapse
- sacral nerve stimulation (in cases of fecal incontinence/constipation)
- implantation and explantation of ports (permanent venous access, e.g., for use during chemotherapy)

YOUR EXPERT:



Dr. med. Hubert Lausberg



Quality of life via function and aesthetics

Dr. med. Daniel Sattler offers minimally invasive treatments and state-of-the-art surgical techniques in the field of plastic and aesthetic surgery. Plastic surgery makes restoration of body functions possible following tumour removal, serious diseases or congenital malformations. Through aesthetic treatments and surgeries, your life and your body can be reconciled. Before each treatment, intensive and detailed consultation takes place, during which all questions and individual needs are discussed.

Our range of services

Plastic surgery

- hand surgery
- peripheral nerve surgery
- reconstructive surgery of the face, extremities and trunk
- surgical coverage of defects following infection, tumour removal or trauma

Aesthetic surgery

- facelifts and shaping
- neck lifts and corrective surgery
- blepharoplasty (eyelid correction)
- rhinoplasty (nasal corrections)
- otoplasty (ear corrections)

Body shaping

- male and female breast surgery, augmentation, reduction and lift
- male and female abdominoplasty
- thigh lift and reshaping
- upper arm lift and reshaping
- buttock reduction, shaping and lift
- liposuction (fat removal) of the trunk and extremities



Treatment for a better attitude towards life.

Aesthetic treatments

- botulinum toxin – wrinkle therapy
- hyaluronic acid – lip-shaping, wrinkle therapy
- autologous fat injection – facial rejuvenation
- liposuction of the cheeks and neck

Laser treatments

- hair removal
- skin pigmentation disorders
- skin tumours/moles



YOUR EXPERT:

Dr. med. Daniel Sattler

Internal medicine, interventional cardiology and special rhythmology



The Beta Klinik specializes in cardiological preventative care, treatment and aftercare.



Focus areas: the heart and circulation

Prof. Dr. med. Jörg Otto Schwab diagnoses and treats disorders of the cardiovascular system. One area of focus is the diagnosis and treatment of cardiac arrhythmias, including telemonitoring (remote diagnostics and monitoring), as well as their catheter-directed treatment (ablation). In addition, the experienced cardiologist implants cardiac pacemakers as well as implantable cardioverter defibrillators (ICDs), and he carries out patient aftercare. If necessary, Prof. Schwab makes use of magnetic resonance imaging for diagnostic purposes; the technology is also used for special, functional examinations of the heart. A unique feature of his treatment is his close cooperation with the Beta Klinik radiology department, which makes extensive MRI examinations possible for patients with cardiac pacemakers or ICDs.

In order to prevent heart attacks, Prof. Schwab's cardiology team relies on comprehensive diagnostics and treatment of cardiac insufficiency, including catheter examination for the removal of coronary artery constriction. In cases of severe congestive heart failure/cardiac insufficiency, detailed advice is given as well as assistance choosing an appropriate form of therapy (usually aided by electrical equipment).

Prof. Schwab uses modern examination procedures (e.g., echocardiography, cardiac MRI) in the context of cardiovascular disease prevention.

Prof. Schwab is also available at the weekend and can be found in the cardiac emergency room.

Primarily treated diseases/disorders

- cardiovascular disorders
- cardiac arrhythmia
- cardiac insufficiency/congestive heart failure
- high blood pressure

Diagnostic services

- resting and stress ECGs, 24-hour ECG
- resting and stress ECGs, including three-dimensional echocardiography
- cardiac pacemaker and defibrillator aftercare
- MRI examinations of patients with cardiac pacemakers or defibrillators
- cardiac MRI
- telemonitoring of patients with congestive heart failure as well as cardiac pacemakers/defibrillators

Surgical range of services

- catheter-assisted surgery on the coronary vessels (cardiac catheters) as well as cauterization for cardiac arrhythmias (ablation)
- implantation of mini-sensors for the diagnosis of cardiac arrhythmia or syncope as well as implantation of cardiac pacemakers and defibrillators

YOUR EXPERT:



Prof. Dr. med. Jörg Otto Schwab



Ultrasound scan of the thyroid gland.

Specialized in widespread diseases

Endocrinology and diabetology are major internal medicine focus areas. In addition to special and rare diseases (for example, pituitary gland diseases), the three widespread diseases include diabetes mellitus, osteoporosis and thyroid disease. Prof. Dr. med. Sven Schinner is specialized in these diseases.

Thyroid diseases

Via an interdisciplinary approach with nuclear medicine, we deal with the entire spectrum of thyroid diseases, such as the examination of nodules, hyperthyroidism, hypothyroidism as well as aftercare following thyroid cancer.

Osteoporosis

Treatment for osteoporosis includes diagnostics (DXA bone densitometry), causal investigation and targeted drug therapy. There are several specific factors that can lead to osteoporosis (for example, parathormone, cortisol, testosterone, thyroid disease, or vitamin D deficiency). At the Beta Klinik, interdisciplinary work is also carried out in this area. In the case of osteoporosis, our team cooperates with the orthopaedics and neurosurgery departments.

Diabetes mellitus

These days, through the various available drug options, diabetes can be individually treated to prevent subsequent illnesses. Our concept also bears other internal factors in mind, such as blood pressure and blood lipids.

Diseases of the adrenal glands

This includes, among other things, the examination of adrenal gland enlargements or tumours. Complicated forms of hypertension are also included.

Diseases of the pituitary gland (hypophysis)

This pertains to tumours of the pituitary gland, which require targeted, specific diagnostics and therapy.

In cooperation with the urology department, our team treats male testosterone deficiency (for example, pituitary causes). Together with the gynaecology department, we treat menstrual cycle disorders and the inability to conceive in women (increased male hormones, increased prolactin, polycystic ovary syndrome (PCOS)).



YOUR EXPERT:

Prof. Dr. med. Sven Schinner

■ Nuclear medicine



Nuclear medicine examinations are offered at the Beta Klinik.

Radiation in diagnostics

In nuclear medicine, diseases are investigated and treated primarily through the use of radioactive substances. Generally, these substances are administered intravenously; then, they accumulate in the organ systems that we want to examine or treat. Radiological examinations (MRI, CT) can be supplemented with or replaced by nuclear medicine examinations.

Diagnostic and therapeutic procedures using radioactive substances are carried out in close cooperation with the nuclear medicine department at the University Hospital of Bonn as well as various specialist practices. Treatment using radioactive therapy drugs takes place in the therapy ward of the University Hospital of Bonn, in accordance with special radiation protection requirements. Benign and malignant thyroid diseases and neuroendocrine tumours are treated with radioiodine, for example. Upon request, nuclear medical diagnostics and therapy can be planned and organized for you.

Thyroid gland consultation

One Beta Klinik area of focus is the non-invasive diagnosis and treatment of thyroid diseases, which includes thyroid gland diagnostics and ultrasound examinations. Our team treats thyroid diseases, such as goitres, hyperthyroidism and hypothyroidism via drug or hormone therapy.

Diagnostic range of services

- clinical and specialist examinations
- complete, specialist laboratory diagnostics (fT3, fT4, TSH, thyroid antibodies, tumour markers)
- ultrasound scans of the thyroid gland
- duplex sonography of the thyroid gland (examination of thyroid gland blood flow and any possible nodules)

Therapeutic range of services

- drug/hormone treatment of thyroid diseases (goitres, etc.) as well as hyperthyroidism and hypothyroidism

Nuclear medicine range of services

- planning and organization of nuclear medicine diagnostics and therapy in close cooperation with the University Hospital of Bonn as well as specialist practices

YOUR EXPERT:



Prof. Dr. med. Hans-Jürgen Biersack



Intensive patient counselling is of particular importance in the oncology field.

Modern tumour diagnosis and therapy

In Prof. Dr. med. Marcus Gorschlüter's oncology department, our patients receive medical care that is in line with the latest scientific findings and includes new therapeutic approaches. Our goal is to enable you to live as independently as possible when dealing with difficult situations related to your illness and therapy. We take as much time as needed to give in-depth answers to questions concerning tumour diseases or suspected tumours. As a result of watchful therapy management, treatment side effects can usually be significantly reduced and complications can be avoided.

- bone marrow puncture and cytological assessment of bone marrow
- puncture and cytological evaluation of cerebrospinal fluid (CSF) and body cavity effusions
- pain therapy
- palliative care, including home visits
- counselling on social, occupational, psychological and rehabilitative issues

Oncological range of services

- examination in cases of complaints or findings that indicate malignant blood or tumour disease
- diagnostics and therapy for benign diseases of the blood or immune system disorders
- planning and carrying out of complex interdisciplinary diagnostics to determine the spread of a known tumour disease
- organization of interdisciplinary, holistic concepts for the treatment of tumour diseases (at the Beta Klinik and, in cases of special requirements, in cooperation with external partners possessing the appropriate specializations)
- implementation and management of tumour drug therapy (chemotherapy, targeted and innovative systemic therapy, such as antibody therapy, kinase inhibitors, immunotherapy)
- supportive therapies (infection therapy, growth factor therapy)
- individual coordination of tumour therapy with associated diseases
- transfusion of blood products



YOUR EXPERT:

Prof. Dr. med. Marcus Gorschlüter



Always the first priority – discussions with our patients.

YOUR EXPERT:



Dr. med. Fritz-B. Boecker

Diagnostics and treatment of vascular diseases

In the angiology department, Dr. med. Fritz-B. Boecker is responsible for the diagnosis and treatment of vascular diseases. Through the use of current ultrasound procedures, these examinations can be conducted without any preparation or restrictions – without radiation and without needles. The high-resolution imaging of the artery walls (1/10mm range) is noteworthy. Even the smallest vessels, such as those in the toes and fingers, are shown and functional examinations, such as blood flow, elasticity and resistance diagnostics are made possible.

Vascular examinations

- for the prevention of strokes and heart attacks (parents, siblings), metabolic disorders (cholesterol, lipids, sugar and uric acid), blood pressure disorders and rheumatic diseases
- for cases involving suspected "circulatory disorders" of the head, e.g., in conjunction with vision or speech disorders, double vision (even for a short period of time), abnormal dizziness, unsteady gait, fainting, hearing loss, facial paralysis (drooping mouth), sudden weakness of the arm or leg, memory disorders, signs of dementia

- for the exclusion of arterial circulatory disorders, e.g., pain while walking, especially in the calf; vein thrombosis in cases of leg or arm pain in conjunction with stasis, swelling, discolouration; vascular malformations (aneurysm, fistula, angioma); recurrent, unclear abdominal pain without an organic cause

Diagnostic range of services

- ultrasound (B-image, duplex and triplex sonography)
- infrared and pressure-related measurements
- other specialist area examinations, such as MRI

Potential areas of investigation

- cerebral and carotid arteries as well as vertebral arteries
- shoulder girdle blood vessels
- pelvic and abdominal arteries and veins (renal, intestinal and pelvic arteries and veins)
- arm and leg arteries as well as superficial and deep veins of the leg



In-depth view: Causes of complaints can be manifold.

Specialized in the ear, nose and throat

The ability to hear, smell, taste and keep one's balance – these are of great importance to everyone. In the field of otorhinolaryngology, Dr. med. Jörg Heppelmann's team offers a wide range of medical services at a first-class level – from careful examination and conservative (non-operative) and gentle surgical treatment to aftercare and rehabilitation. Specific areas of focus include hearing disorders, dizziness, nasal and paranasal sinus disorders, snoring and diving medicine.

Following extensive consultation, Dr. Heppelmann also performs aesthetic surgery on the nose and ears and administers wrinkle treatment injections with non-permanent fillers.

Conservative and diagnostic range of services

- hearing threshold measurement (pure tone audiometry)
- speech intelligibility test (speech audiometry)
- test of the cochlea (otoacoustic emission)
- measurement of auditory evoked potentials in the brain (auditory brainstem response)
- middle ear air pressure measurement (tympanometry)
- ultrasound (A and B-mode sonography)
- video endoscopy
- allergy testing (PRICK and RAST)
- dizziness diagnosis (vestibular diagnostics)
- tinnitus diagnosis and therapy
- diving fitness examination
- acupuncture treatment



YOUR EXPERT:

Dr. med. Jörg Heppelmann

Surgical range of services

- corrective surgery on the inner and outer nose (septoplasty and rhinoplasty, turbinoplasty)
- minimally invasive paranasal sinus surgery
- microsurgery on the middle ear, including prosthetic care
- aesthetic, corrective surgery on the outer ear
- plastic/aesthetic removal of facial skin tumours
- surgery on the large salivary glands
- wrinkle injections using non-permanent fillers (hyaluronic acid)

■ Dermatology and allergology



Our expert will look for the smallest changes to the skin.

In focus: skin diseases

At the Beta Klinik dermatological centre, the team lead by Prof. Dr. med. Uwe Reinhold treats all acute and chronic diseases of the skin, hair, nails and mucous membranes. These diseases include all forms of skin cancer (malignant melanoma, squamous cell carcinoma, basal cell carcinoma, actinic keratosis, skin metastasis of solid tumours, e.g., breast cancer), skin allergies, psoriasis, acne and all other dermatological disorders of the face.

Diagnostic range of services

- early detection and prevention of skin cancer using state-of-the-art diagnostic procedures such as:
 - optical coherence tomography (OCT; Vivosight®), multispectral analysis (MelaFind®) and confocal laser scanning microscopy (VivaScope®)

Therapeutic range of services

- for skin cancer: micrographically controlled surgery, photodynamic therapy (PDT), immunotherapy, electrochemotherapy
- in cases of various skin alterations: laser therapy, e.g., intense pulsed light (IPL) for blood vessels, facial flushing and excess body hair; excimer laser therapy for vitiligo and psoriasis; CO2 laser for acne scars

Aesthetic dermatology

- Botox, laser or hyaluronic acid for the treatment of facial wrinkles
- Nd: YAG laser, KTP laser and IPL for the treatment of spider veins, varicose veins or port-wine stains, haemangioma and blood vessels as well as unwanted hair growth
- skin rejuvenation via fruit enzyme peeling/ microdermabrasion/photorejuvenation
- erbium laser for the treatment of benign skin changes
- HydraFacial™ for young, radiant and healthy skin through the combination of exfoliation, deep cleansing and the dermal infusion of antioxidants, vitamins and hyaluron with cold light and lymphatic drainage, using the so-called multi-functional vortex technology

YOUR EXPERT:



Prof. Dr. med. Uwe Reinhold



Ophthalmology on the cutting-edge of science.

Everything related to the eye

For decades, the Roth Eye Clinic team has been highly competent in the field of ophthalmology as well as state-of-the-art diagnostics and treatment procedures. As a result, exceptional treatments and therapies are possible.

Conservative and diagnostic range of services

- eye pressure and visual acuity measurement
- digital fluorescein angiography (contrast agent examination of the ocular fundus)
- spectral OCT: high-resolution diagnostics of the macula
- HRT: three-dimensional analysis of the optic nerve, e.g., in cases of glaucoma
- ultrasound diagnostics, pachymetry (measurement of corneal thickness)
- endothelial biomicroscopy (examination of the inner corneal wall)
- Pentacam (tomography of the anterior segment of the eye, corneal structure measurement and quality of the lens)
- electrophysiology (measurement of nervous system signals), wavefront analysis (measurement of optical aberrations)
- screening of premature babies
- vision therapy/paediatric ophthalmology

Surgical range of services

- cataract and glaucoma surgery
- refractive surgery (change of refractive strength) and laser treatment in cases of defective vision
- vitrectomy
- surgery in cases of retinal detachment
- treatment of macular degeneration
- eyelid surgery in cases of malformations and tumours
- laser treatment of retinal diseases
- UV crosslinking in cases of keratoconus (corneal degeneration)



YOUR EXPERTS:

Dr. med. Claudia Inhetvin-Hutter



Dr. med. Felix Roth

■ Internal medicine, gastroenterology and cardiology



Sonography of abdominal organs in the examination of symptoms.

In focus: internal organs

Dr. med. Christian Fehring and Dr. med. Peter May specialize in the diagnosis and treatment of diseases of the internal organs, the cardiovascular system, blood vessels and respiratory organs. They perform non-invasive examination procedures, such as ultrasound, ECG, pulmonary function tests and blood pressure measurement as well as minimally invasive diagnostic procedures, including gastroscopy and colonoscopy.

Treatment options include drug therapy and chirotherapy. In addition, intestinal polyps can be removed during colonoscopy. Moreover, both physicians employ naturopathic treatment methods.

Range of services

- cardiological diagnostics
 - colour Doppler echocardiography (cardiac ultrasound)
 - resting ECG, stress ECG and long-term ECG
 - long-term blood pressure measurement
 - pulmonary function test
 - sports medicine performance assessment
- ultrasound examination
 - ultrasound of abdominal organs and thyroid glands
 - vascular ultrasound (brain-supplying blood vessels and extremities)
- gastroenterological diagnostics
 - gastroscopy
 - colonoscopy with polyp removal
- travel medicine consultation
- diving fitness examination
- supplementary therapy methods
 - chirotherapy (manual medicine)
 - diabetes care
 - diabetes and asthma training
 - drug therapy and infusions
 - naturopathic treatment

YOUR EXPERTS:



Dr. med. Christian Fehring



Dr. med. Peter May



Conventional medicine or traditional Chinese medicine: Different procedures are used as required.

Conventional and naturopathic medicine

Dr. med. Monika Rose-Oxenfurt is an expert in and is passionate about the treatment of acute and long-term symptoms in the field of internal medicine. Thanks to her training as an internist, her continuous educational development and her practical experience, conservative treatment methods can be complemented with natural healing methods. State-of-the-art diagnostic and therapeutic options combined with alternative healing procedures and special laboratory tests optimize the range of medical possibilities. Primary focus is put on acute and chronic internal diseases (e.g., diabetes, asthma and heart disease), chronic pain syndromes (migraine, arthrosis and fibromyalgia), exhaustion, burnout and somatic system disorders (physical symptoms based on psychological causes) and sleep disorders. With the aid of complementary diagnostics and therapy procedures, even abdominal pain of an unknown cause (e.g., irritable bowel syndrome) can be investigated and treated to ensure that a significant increase in the quality of life is achieved.

Another internal medicine area of focus is the treatment of hypertension, which is carried out in cooperation with Prof. Dr. med. Sven Schinner.

Conservative and diagnostic range of services

- detailed discussion of patient history
- resting ECG, stress ECG, long-term ECG and long-term blood pressure measurement
- ultrasound examinations (abdominal, thyroid, carotid)
- general blood tests (in-house laboratory)

Diagnostics and special range of services

- diagnostics conducted in a specialist laboratory (e.g., cases of irritable bowel syndrome or food intolerance)
- diagnosis and treatment of complicated and difficult to manage blood pressure issues
- traditional Chinese medicine (acupuncture, TCM, medicinal plants)
- phytotherapy, homeopathy
- orthomolecular medicine (balanced administration of vitamins and trace elements)
- neural therapy and Medi-Tape, according to Dr. med. Sielmann
- microbiological therapy
- cell symbiosis therapy, according to Dr. med. Kremer
- bioresonance and magnetic field therapy (Bicom)
- infusion therapy – vitalization, detoxification, regeneration and invigoration
- complementary tumour therapy (in conjunction with conventional medicine), according to Prof. Dr. med. Beuth



Dr. med. Monika Rose-Oxenfurt

■ Anaesthesia and pain therapy



Anaesthetists supervise every surgery.

Anaesthesia – as gentle as possible

At the Beta Klinik, all modern anaesthetic procedures are offered – in close consultation with the surgeons. State-of-the-art anaesthetic management, monitoring and intraoperative laboratory diagnostics (blood gas analysis during surgery) contribute to your safety. In an intensive preliminary talk, time is taken to answer our patients' questions and respond to their individual wishes.

Anaesthetic methods

- general anaesthesia
- sedation (twilight sleep)
- stand-by anaesthesia (surgical monitoring)
- regional anaesthesia (analgesia specific to certain body regions)
- spinal anaesthesia (spinal canal puncture)

- epidural anaesthesia (catheter near spinal cord nerves)
- plexus anaesthesia (anaesthesia of a neuroplexus, e.g., in the arm)
- peripheral nerve blocks (single nerves)

Outpatient pain therapy

We help patients who are in chronic pain using different treatment methods, such as individually adapted medicinal therapies or acupuncture. We treat headache, facial pain, neuropathic pain (nerve injuries, amputations, phantom pain), and musculoskeletal system pain following a herpes zoster infection (shingles) or as a result of tumour diseases.

Pain therapy following surgery

- patient-specific, personalized therapy (recovery room)
- patient-controlled anaesthesia (PCA pump)
- inpatient infusion

YOUR EXPERTS:



Michael Bochnick



Dr. med. Alice Chon-Völker



In order for you to keep a clear head

At her Beta Klinik-based neurological practice, Dr. med. Judith Maria Hoffmann offers a comprehensive treatment range and very thorough diagnostics on a daily basis. In the preliminary stage, she conducts a detailed medical history interview, during which she collects biographical data and asks patients about other, non-neurological illnesses. Comprehensive neurological examinations are also available. Depending on the diagnosis and based on recommendations made by the German Neurological Society, these include the determination of blood values, cerebrospinal fluid analysis and other laboratory services. For diagnostics, Dr. Hoffmann uses a 3-Tesla MRI scanner, special EEG procedures, Doppler sonography of the cerebral vessels and – in collaboration with Dr. med. Walther Koehler – all standard electrophysiological examination options.

Outpatient headache treatment

Dr. Hoffmann places particular emphasis on headache diagnosis and therapy. In Germany, approximately 10 million people suffer from headaches. The causes are numerous and range from acute or chronic illnesses to overly stressful situations in everyday life. For those affected, our interdisciplinary team offers the most modern diagnostic and therapeutic options.

Epilepsy

At the Beta Klinik, Dr. Hoffmann also offers counselling sessions for patients with epilepsy as well as other non-epileptic types of seizures. Maximum seizure control and the maintenance of performance and quality of life are the main treatment objectives.



One main area of focus is headache diagnosis and therapy.

Special consultation

- epilepsy
- First Seizure Clinic: Interdisciplinary examination and diagnosis of first-time disturbance of consciousness
- headache and migraine, including botulinum toxin consultation
- dizziness
- polyneuropathy
- acute and chronic inflammatory diseases of the central nervous system
- dementia
- psychotherapy – specialist



YOUR EXPERT:

Dr. med. Judith Maria Hoffmann



Competence for teeth and jaws: Bernd G. Knoch and Dr. med. dent. Guido Wegner

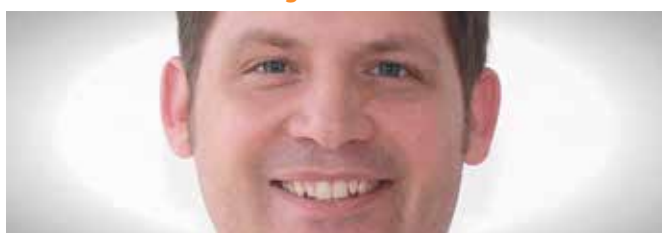
YOUR EXPERTS:



Zahnarzt Bernd G. Knoch



Dr. med. dent. Guido Wegner



Priv.-Doz. Dr. med. Dr. med. dent. Christian Naujoks

More than just teeth

The Beta Dental team led by Bernd G. Knoch, Dr. med. dent. Guido Wegner and Dr. med. Dr. med. dent. Christian Naujoks provides comprehensive care for patients with dental or jaw problems and/or tooth and jaw deficiencies as well as disorders of the mouth, jaw and facial area. Preventive examination and non-committal counselling are as much a part of their offer as complex tooth and jaw treatment.

As dentists at the Beta Klinik, Bernd G. Knoch and Dr. Guido Wegner cover the complete dental treatment range of services. They have stood for competence and the highest level of trust for over 20 years. One of their specialties is dental implants: Replacing missing teeth with dental implants has proven to be the best medical solution.

Back, neck, shoulder and hip problems can be triggered by malfunctions in the jaw area. In this regard, close cooperation with the many specialists working in various Beta Klinik areas offers optimal diagnostic possibilities.

Range of services (examples)

- general dentistry
- aesthetic dentistry
- implantology
- all-on-4 (fixed dental implants/dentures in one day)
- dentures (crowns, bridges and veneers)
- root canal treatment (endodontics)
- tooth treatment/operations under general anaesthesia (wisdom tooth removal)
- oral surgery
- anxious patients (you sleep, we work)
- orthodontics (braces/brackets/Invisalign)
- temporomandibular joint therapy (cruncher guards)



In constant dialogue with the patient.

- parodontology
- bleaching (teeth whitening)
- professional teeth cleaning

Oral and maxillofacial surgery

The mouth and the face are very sensitive areas for everyone: Dr. Dr. Christian Naujoks specializes in disorders requiring oral and maxillofacial surgery. In diagnostics and therapy, he attaches great importance to the use of innovative and minimally invasive methods as well as to compliance with the highest safety and hygienic standards.

Range of services (examples):

- dysgnathia surgery (orthodontic surgery for jaw misalignment)
- bone structure of the jaw, for example with iliac crest grafting, sinus lift
- computer-aided operation planning
- periodontal surgery for periodontal regeneration in cases of diseases of the gums
- oral mucous membrane disease diagnostics and therapy
- treatment of benign and malignant tumours
- malformation surgery, e.g., in cases of cleft lip and cleft palate

Maintaining dialogue

Dr. med. Barbara Hawellek offers outpatient treatment in the fields of clinical psychiatry and psychotherapy (individual/group therapy), and her main areas of focus consist of deep psychotherapy, interpersonal psychotherapy, Cognitive Behavioral Analysis System of Psychotherapy (CBASP) and philosophical teaching practice. Depending on the condition, treatment may be paired with drug treatment.

Diagnostic and treatment areas of focus

- affective disorders, such as depression, bipolar affective disorder
- anxiety disorder, obsessive-compulsive disorder, personality disorder
- burnout syndrome
- cognitive disorders
- existential crisis – counselling within the framework of philosophical teaching practice

Diagnostic methods

- psychometric diagnostics (e.g., personality, depression, concentration and cognition measurement)
- optional laboratory tests (blood and cerebrospinal fluid), EEG (electroencephalogram), MRI of the brain – to rule out physically detectable causes



YOUR EXPERT:

Dr. med. Barbara Hawellek



In close collaboration with patients, the BetaGenese team develops personalized therapies.

Harmonization of the body and soul

Everyone has probably experienced a life crisis, the feeling of being professionally or privately overburdened, unexplained anxiety and pain, or night sweats and sleep disorders at least once.

The BetaGenese Klinik, a subsidiary of the Beta Klinik, specializes in psychosomatic diseases. The symptoms and causes of psychosomatic disorders and illnesses are manifold, and they require in-depth and thorough clarification and diagnosis in order to develop an effective therapy plan. Head physician Carmen Fargel and her team treat, among others:

- depression and bipolar disorders
- anxiety disorder and obsessive-compulsive disorder
- chronic pain syndromes, especially migraine and headaches
- dissociative disorders and borderline syndrome
- burnout, severe fatigue syndrome
- chronic fatigue syndrome (myalgic encephalomyelitis)
- traumatic sequelae

- psychosomatic system complexes and somatization disorders
- chronic sleep disorders
- eating disorders

The BetaGenese concept

Our experts have developed an integrative treatment approach that focuses on the special interaction of physical and psychological functions: The healing of psychosomatic disorders occurs through a psychosomatic process, in which the body and the psyche enter into a "dialogue". The holistic, therapeutic BetaGenese concept is not dogmatic; personalized and solution-oriented treatment strategies are developed in intensive cooperation with our patients. Our patients' personal strengths and resources guide the process, not the illness or "the problem". Our patients are the experts regarding the subject matter, and our team provides expertise regarding the process.

Treatment methods:

- individual and group psychotherapy using different methods
- individual and group multimodal body therapy
- non-verbal therapy programs, such as art/design therapy, music therapy, dance therapy, theatre therapy and drama therapy
- relaxation methods, Mindfulness-Based Stress Reduction (MBSR), Alexander Technique, Feldenkrais Method, QiGong
- physical therapy, manual therapy and craniosacral therapy
- coaching services
- medical consultation, detailed visits and pharmacotherapy



Vast experience in the treatment of adolescents.



Computer-assisted therapies such as biofeedback and neurofeedback are main areas of focus.

Biofeedback and neurofeedback

One area of focus is computer-assisted neurophysiological therapy in the form of biofeedback and neurofeedback. Using a computer, the patient's own body signals are reported back to the patient. As a result, patients learn to understand these signals and actively control their body functions. This empirically proven, non-invasive procedure can lead to a deep understanding of the link between somatic and psychological processes and the ability to deliberately influence these processes as well as their symptoms.

Experience and competence

The BetaGenese Klinik, an innovative model, was created by an experienced team of specialists in the fields of psychiatry/psychotherapy, psychosomatic medicine and child psychiatry, psychology, sports and social science as well as special therapy. The clinic combines its competences and vast experience in a creative manner to best meet individual patient needs. In addition, BetaGenese patients benefit from the close cooperation and the interdisciplinary exchange among medical specialist at the Beta Klinik – whenever in-depth somatic diagnostics and therapy are useful.

Stay and ambiance

The ability to withdraw from a sometimes conflict-laden environment to a medical facility that provides intensive inpatient treatment is sometimes necessary. In addition to inpatient admission, semi-inpatient treatment, outpatient treatment and short-term intensive therapy are also available. Our BetaGenese rooms offer modern living spaces with pleasant atmospheres, which contribute to well-being and recovery.



YOUR EXPERTS:

Carmen Fargel



Lilli E. Heinen



Dr. med. Marcel Lüssem



Norman Mink

■ Laboratory medicine



Fast results thanks to state-of-the-art technology.

Fast and reliable

The Beta Klinik medical laboratory is a branch of the Sommershof Laboratory (LIS), which has supplied hundreds of doctors in the Cologne-Bonn region with reliable laboratory diagnostics for more than 50 years. Quality, care and patient safety are top priorities for the laboratory, which has been accredited since 2004 (DIN EN ISO 15189).

The LIS range of services encompasses all clinically relevant laboratory diagnostics. Specialists in the fields of laboratory medicine, microbiology and infection epidemiology, transfusion medicine and hemostaseology are available for consultation.

The Beta Klinik LIS team ensures rapid, on-site diagnostics. Using state-of-the-art technology as well as extensive expertise and experience, the team led by Dr. med. Christiane Boogen provides daily diagnostic and treatment support. This is the case during professional discussions among colleagues as well as during individual, comprehensible discussions with Beta Klinik patients.

Areas of expertise

- laboratory medicine
- microbiology
- haemostaseology (blood coagulation)
- transfusion medicine

Consultation

Dr. Boogen is also specialized in blood coagulation and provides haemophilia and thrombophilia consultation as well as blood coagulation diagnostics in cases of miscarriages with unknown causes.

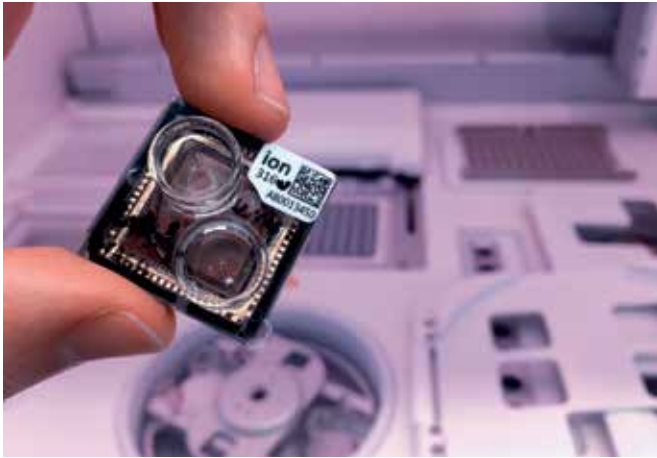
Laboratory range of services

- reliable diagnostics by means of state-of-the-art technology
- fast results – over 90 percent delivered on the same day
- close laboratory coordination with the attending physician
- fast and flexible transmission of laboratory results, in writing and digitally
- developments in research, science and healthcare policy are continuously being reviewed and successfully implemented

YOUR EXPERT:



Dr. med. Christiane Boogen, MBA



Know what is coming

Everyone has their own genetic fingerprint. This fingerprint can help you learn more about yourself, including knowing your personal probability of developing diabetes, Alzheimer's, Parkinson's, intestinal cancer, breast cancer or prostate cancer. Using the predictive genetic diagnostics offered by Dr. Seibt Genomics, it is possible to identify genetic diseases in advance, i.e., before occurrence. This information can be used to prevent diseases or start treatment at an early stage.

Know what works

Based on DNA, the team led by Dr. rer. nat. Benjamin Seibt can also determine which drugs are effective for a patient and which are not: People not only have external differences – their reactions to drugs differ as well. A standard dose, which proves ineffective in some people, can have a toxic effect on others. Via the use of pharmacogenomics, personalized dose adjustments can be made to effective drugs.

In addition, Dr. Seibt Genomics investigates genetic food tolerances/intolerances and genetic health factors. One special feature involves complete genome analysis, which includes an evaluation in which all genes are examined – including those whose significance has not been explored yet. In cases of new research results, a simple and quick comparison, without repeated analysis, is possible.



GENial examination

Advantages of gene diagnostics

- certainty regarding one's personal probability of genetic diseases
- disease prevention and early diagnosis as well as the early start of therapy for a better prognosis
- effective and personalized drug doses
- knowledge of drug tolerances/intolerances and food tolerances/intolerances

Additional services

- exome sequencing and whole genome sequencing
- expertise for doctors, pharmacists, scientists, clinics, hospitals and universities



YOUR EXPERT:

Dr. rer. nat. Dipl.-Pharm. Benjamin Seibt

How to find us/Contact

How to find us

By car

The Beta Klinik is located in the immediate vicinity of the Bonn-Ost junction of the A 59 motorway.

By plane

Two international airports are located near the Beta Klinik: Cologne/Bonn (CGN) and Düsseldorf (DUS).

From Cologne/Bonn airport (approximately 18 kilometres from the clinic), take regional express train RE8 to the "Bonn-Oberkassel" railway station. The remaining short distance to the Beta Klinik can be reached by taxi.

From Düsseldorf airport (approximately 70 kilometres from the clinic), take a train to the Bonn main railway station. The remaining four kilometres can be reached by taxi or via bus line 607 ("Bonner Bogen" stop). For more convenience, take bus line 606 to the "Konrad-Zuse-Platz" stop, and walk the short distance to the clinic.



Idyllically located on the Rhine River.



By train

If you are travelling by train, take an ICE train to the "Siegburg/Bonn" railway station (approximately 9 kilometres from the clinic). From there, take tram 66 to the "Bonn Ramersdorf" stop.

Parking

Various parking facilities are available at the Beta Klinik. In addition to paid, street parking, an underground car park is also available beneath the Beta Klinik, and the entrance is located to the right of the Beta Klinik building. Take a ticket at the car park entrance. Pass through the barrier, and turn left after driving over the first speed bump. This will lead you to the VIP parking area, which is blocked by another barrier. At the end of your stay at the Beta Klinik, you will be entitled to receive a discounted ticket for VIP parking.

Beta Klinik GmbH

The International Clinic Bonn
Joseph-Schumpeter-Allee 15
53227 Bonn
Germany
Phone: +49 (0) 228 909075-0
Fax: +49 (0) 228 909075-11
E-mail: info@betaklinik.de
Web: www.betaklinik.de

Legal notice

Editor:

Beta Klinik GmbH, Joseph-Schumpeter-Allee 15, 53227 Bonn, Germany, Phone: +49 (0) 228 909075-0

© 2017 Beta Klinik GmbH

Coordination/editing: Beta Klinik GmbH

Photos: Christiane Kappes, Manfred Daams, Tomek Sawyer

Graphics: Nathalia Fortes

Printing: Kammel Druck, Bonn

General translation: easy English experts, Essen

